



# 2005

## Venue Guide for Group Stage Games

Please distribute to your team members.

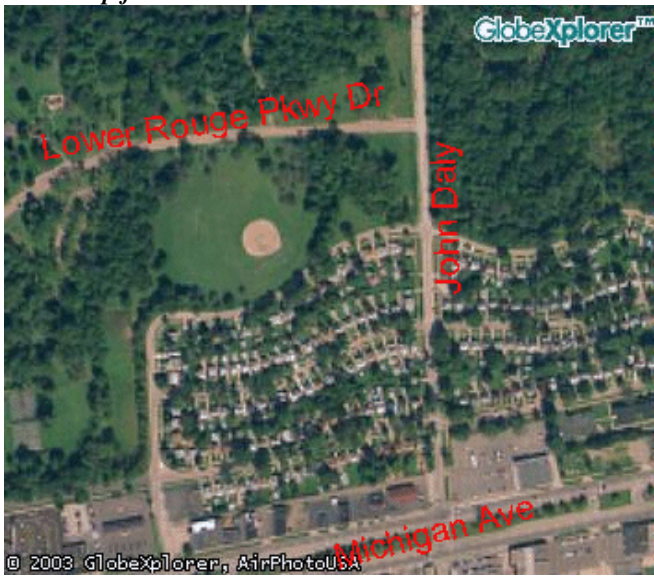
### INKSTER PARK

Take Michigan Ave (US 12) West > Make a right at John Daly. The park entrance is on left side. Look for a dirt road and a wooden sign board saying "Inkster Park" on left hand side. (Lower Rouge Pkwy Drive)

Road Map for Inkster Park



*Aerial Map for Inkster Park*



## HELM'S HAVEN

From Ford Rd West, Take Hines Drive Exit. Pass Outer drive and the park is on your left. The entrance to the park is not clearly visible from Hines Drive so when you see the sign for the park "Helm's Haven", make a left on the dirt road. Parking is on your right next to shelter.

*Road map for Helms Haven*



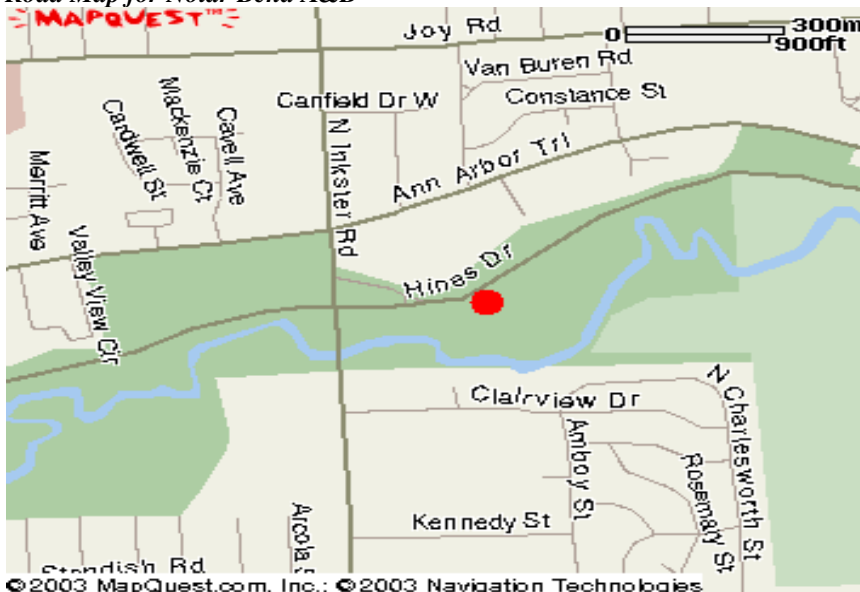
*Arial Map for Helms Haven*



**NOLAR BEND # A & # B**

Take Ford West all the way till Inkster Road, Make right for Inkster (North). After crossing Warren, make a right for Hines Drive - at STOP sign make a left. The parks will be on your right side. There are 2 diamonds at this park A & B. Please make sure that you are in the right diamond.

*Road Map for Nolar Bend A&B*



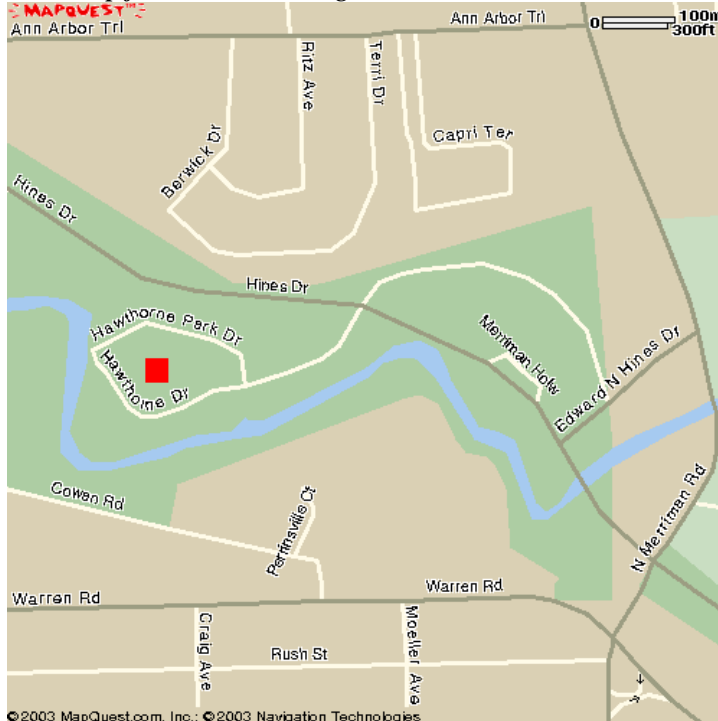
*Arial Map for Nolar Bend A&B*



**HAWTHORNE RIDGE**

From Ford Rd west go all the way to Merriman Rd, make a right at Merriman (North). After crossing Warren road, you will see a sign for Hines Drive - Make left turn. At the stop sign make right and the park is on your left hand side (just before Valley View)

*Road Map for Hawthorne Ridge*



*Arial view for Hawthorne Ridge*



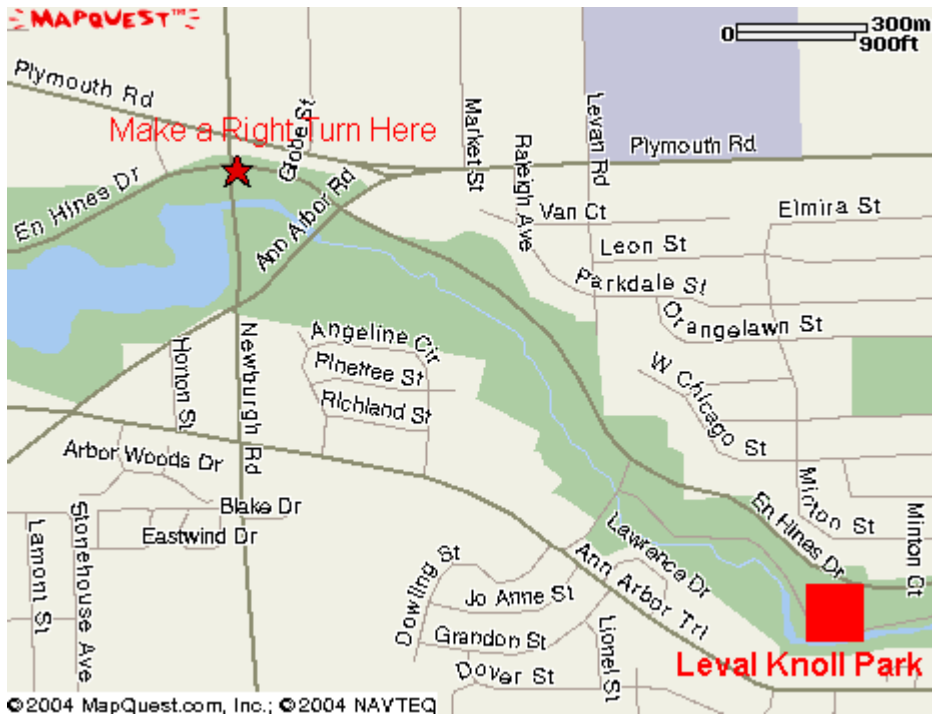
## LEVAN KNOLL

*Levan knoll being the farthest park from Dearborn, please allow sufficient drive time to get there on time. All games scheduled at Levan Knoll have a 10 minute buffer in the Game Time Line as per tehFCL rules Book.*

**Route 1:** Take Ford Rd. West all the way to Newburgh, make right on Newburgh (north). After crossing Ann Arbor Rd, Make a right @ Hines Drive. Afetr  $\frac{3}{4}$  mile, make a right turn on Levan Rd, and an immediate Left (follow the dirt road to the park). In case you miss the first entrance, after  $\frac{1}{4}$  mile there is another entrance to the park.

**Route 2:** From Ford rd. west take exit for Hines Drive. Follow Hines drive all the way to Levan Knoll road. If you reach Newburgh road, you have crossed the park.

*Directions for Levan Knoll*



*2 entrances to Levan Knoll Park*



All the best 😊